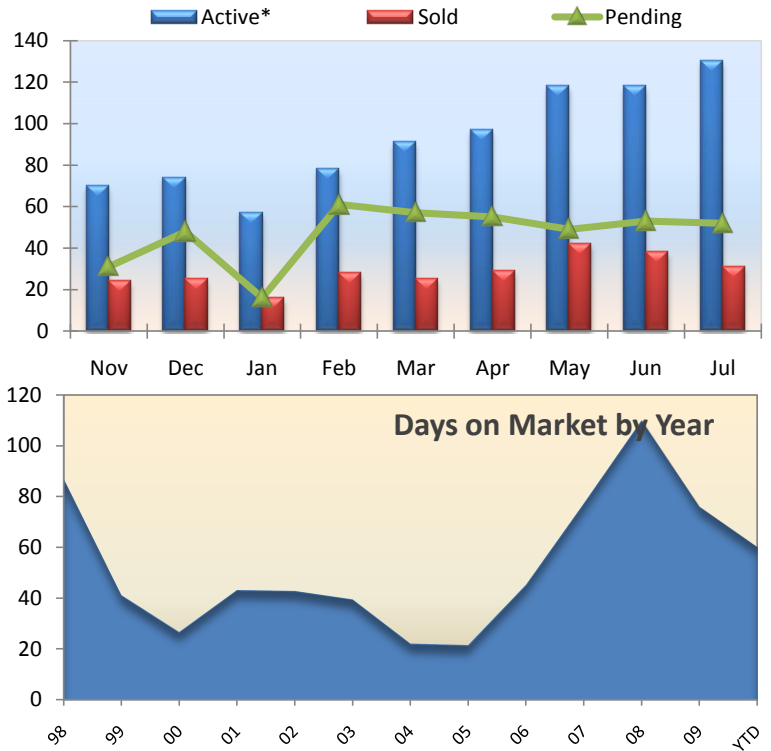
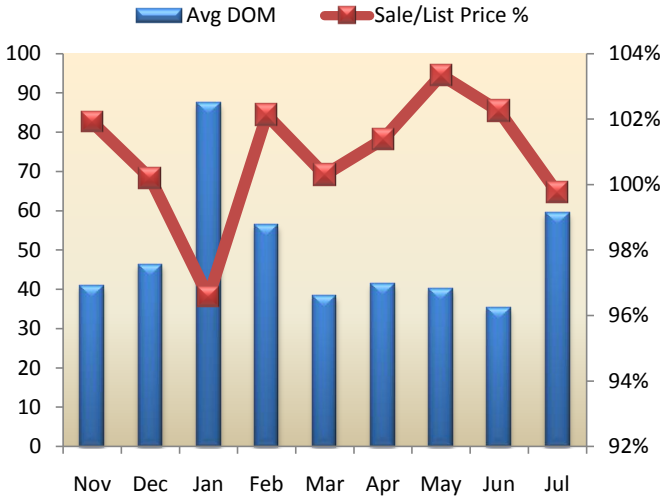


Attached Homes: Hayward

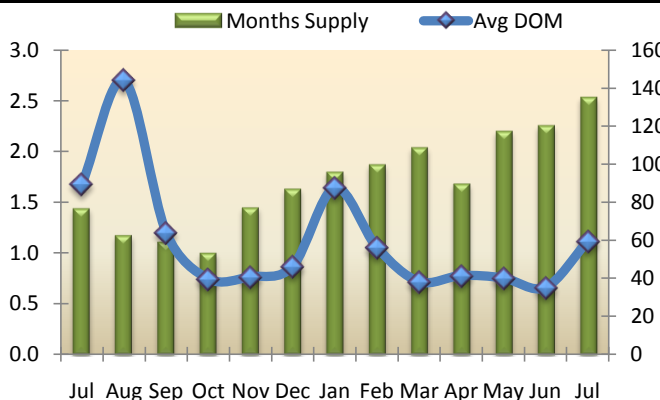
July-10

Days on Market (DOM) for the Hayward area year-to-date is around 60. The median attached home price in Hayward for July was \$159,000. As of the last day of July there were 130 active homes in Hayward. At current selling rates this means there is approximately 3 months of inventory in Hayward remaining.



Summary Analysis (Condo/Duet/Townhomes)

	Active*	Pending	Sold	Months Supply	Avg List Price Sold	Median Sale Price	Avg Sale Price	Average DOM	Avg \$ Sqft Listed	Avg \$ Sqft Sold	Sale Price/List Price
Jul 09	87	62	37	1.4	\$171,515	\$150,000	\$173,682	89	\$146	\$148	101.26%
Aug 09	71	56	35	1.2	\$160,884	\$142,000	\$161,151	144	\$135	\$136	100.17%
Sep 09	65	57	37	1.1	\$179,789	\$188,000	\$184,110	64	\$156	\$160	102.40%
Oct 09	57	57	33	1.0	\$155,606	\$145,000	\$157,182	40	\$143	\$145	101.01%
Nov 09	70	31	24	1.4	\$189,454	\$203,950	\$193,065	41	\$162	\$164	101.91%
Dec 09	74	48	25	1.6	\$195,906	\$187,500	\$196,276	46	\$138	\$139	100.19%
Jan 10	57	16	16	1.8	\$186,363	\$175,000	\$179,959	88	\$175	\$169	96.56%
Feb 10	78	61	28	1.9	\$183,922	\$156,000	\$187,830	56	\$139	\$143	102.12%
Mar 10	91	57	25	2.0	\$151,320	\$145,000	\$151,772	38	\$136	\$137	100.30%
Apr 10	97	55	29	1.7	\$194,948	\$160,000	\$197,633	41	\$166	\$169	101.38%
May 10	118	49	42	2.2	\$194,966	\$192,500	\$201,489	40	\$161	\$166	103.35%
Jun 10	118	53	38	2.3	\$174,146	\$173,500	\$178,052	35	\$152	\$156	102.24%
Jul 10	130	52	31	2.5	\$177,465	\$159,000	\$177,023	59	\$148	\$147	99.75%
Month to Month	Sold	%Change	Avg list	% Change	Median Sale Price	% Change	Avg Sale Price	% Change	Avg DOM	% Change	Sale Price/List Price
Jul 10	31	-16.22%	\$177,465	3.47%	\$159,000	6.00%	\$177,023	1.92%	59	-33.58%	99.75%
Jul 09	37	48.00%	\$171,515	-30.13%	\$150,000	-34.21%	\$173,682	-29.30%	89	101.10%	101.26%
Jul 08	25	56.25%	\$245,484	-45.04%	\$228,000	-44.73%	\$245,647	-43.96%	44	2.55%	100.07%



YTD Sold Summary					
	2010	2009	2008	2007	2006
Range	# listings	# listings	# listings	# listings	# listings
< 100k	31	20			
\$100k-299k	193	195	59	16	8
\$300k-399k	12	13	32	49	66
\$400k-499k	6	7	5	47	90
\$500k-599k	1			26	49
\$600k-699k				2	8
\$700k-799k					
\$800k-899k					
\$900k-999k					

*as of the last day of the month at 11:59 pm PST **reflects change from 2005