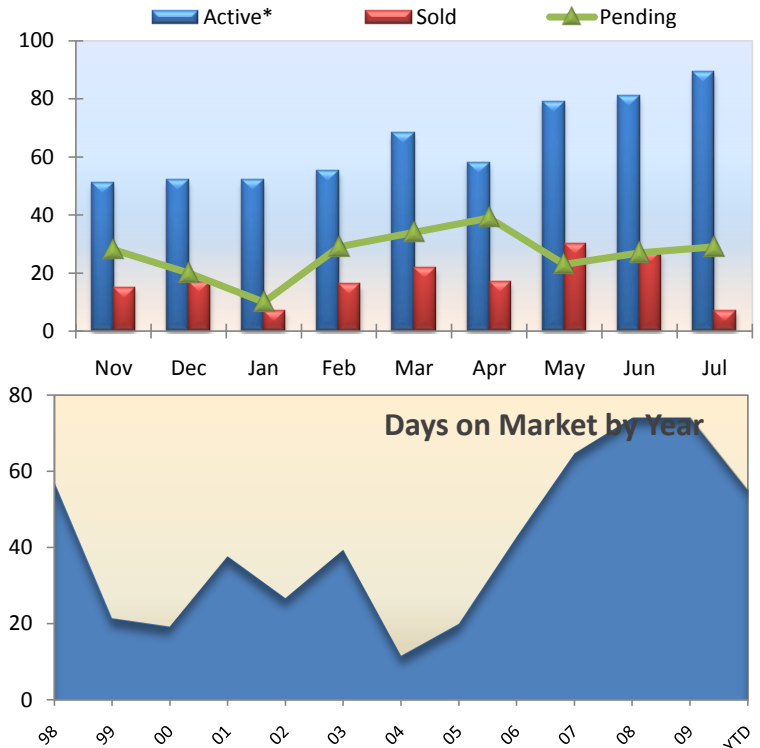
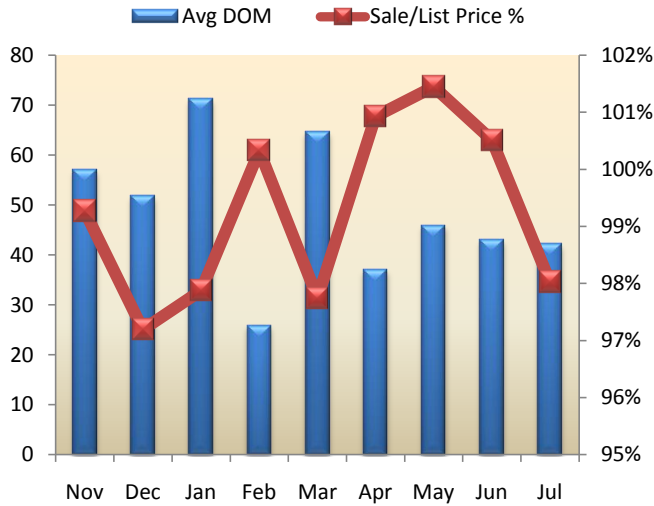


Attached Homes: Dublin

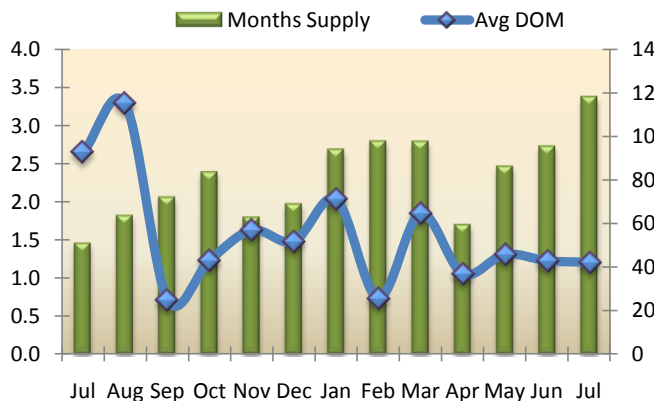
July-10

Days on Market (DOM) for the Dublin area year-to-date is around 55. The median attached home price in Dublin for July was \$288,000. As of the last day of July there were 89 active homes in Dublin. At current selling rates this means there is approximately 3 months of inventory in Dublin remaining.



Summary Analysis (Condo/Duet/Townhomes)

	Active*	Pending	Sold	Months Supply	Avg List Price	Median Sale Price	Avg Sale Price	Average DOM	Avg \$ Sqft Listed	Avg \$ Sqft Sold	Sale Price/List Price
Jul 09	39	29	18	1.5	\$321,902	\$346,000	\$320,494	93	\$241	\$239	99.56%
Aug 09	45	22	17	1.8	\$335,894	\$340,000	\$335,900	115	\$292	\$291	100.00%
Sep 09	53	26	25	2.1	\$315,974	\$339,000	\$328,431	25	\$247	\$254	103.94%
Oct 09	63	31	13	2.4	\$387,538	\$405,000	\$389,577	43	\$272	\$273	100.53%
Nov 09	51	28	15	1.8	\$396,458	\$400,000	\$393,532	57	\$241	\$239	99.26%
Dec 09	52	20	17	2.0	\$341,387	\$349,500	\$331,791	52	\$235	\$228	97.19%
Jan 10	52	10	7	2.7	\$368,400	\$420,000	\$360,571	71	\$225	\$218	97.87%
Feb 10	55	29	16	2.8	\$365,045	\$347,500	\$366,243	26	\$270	\$269	100.33%
Mar 10	68	34	22	2.8	\$337,818	\$352,000	\$330,205	65	\$257	\$251	97.75%
Apr 10	58	39	17	1.7	\$373,132	\$369,000	\$376,588	37	\$265	\$266	100.93%
May 10	79	23	30	2.5	\$367,018	\$389,000	\$372,332	46	\$250	\$252	101.45%
Jun 10	81	27	27	2.7	\$364,994	\$368,000	\$366,853	43	\$250	\$250	100.51%
Jul 10	89	29	7	3.4	\$301,229	\$288,000	\$295,286	42	\$250	\$245	98.03%
Month to Month	Sold	%Change	Avg list	% Change	Median Sale Price	% Change	Avg Sale Price	% Change	Avg DOM	% Change	Sale Price/List Price
Jul 10	7	-61.11%	\$301,229	-6.42%	\$288,000	-16.76%	\$295,286	-7.87%	42	-54.50%	98.03%
Jul 09	18	0.00%	\$321,902	-26.88%	\$346,000	-20.46%	\$320,494	-24.34%	93	76.40%	99.56%
Jul 08	18	-33.33%	\$440,208	-19.59%	\$435,000	-16.35%	\$423,611	-21.15%	53	29.83%	96.23%



YTD Sold Summary					
	2010	2009	2008	2007	2006
Range	# listings	# listings	# listings	# listings	# listings
< 100k	1				
\$100k-299k	26	35	7	1	1
\$300k-399k	69	43	30	12	5
\$400k-499k	33	26	56	33	11
\$500k-599k	6	1	22	94	62
\$600k-699k	2			14	46
\$700k-799k				3	2
\$800k-899k				2	
\$900k-999k					

*as of the last day of the month at 11:59 pm PST **reflects change from 2005